

# CERTIFICATE OF LOCATION OF GOVERNMENT CORNER

N 1/4 Corner of Section 14, Township 108, Range 40, 5TH P.M.

STATE OF MINNESOTA, County of MURRAY

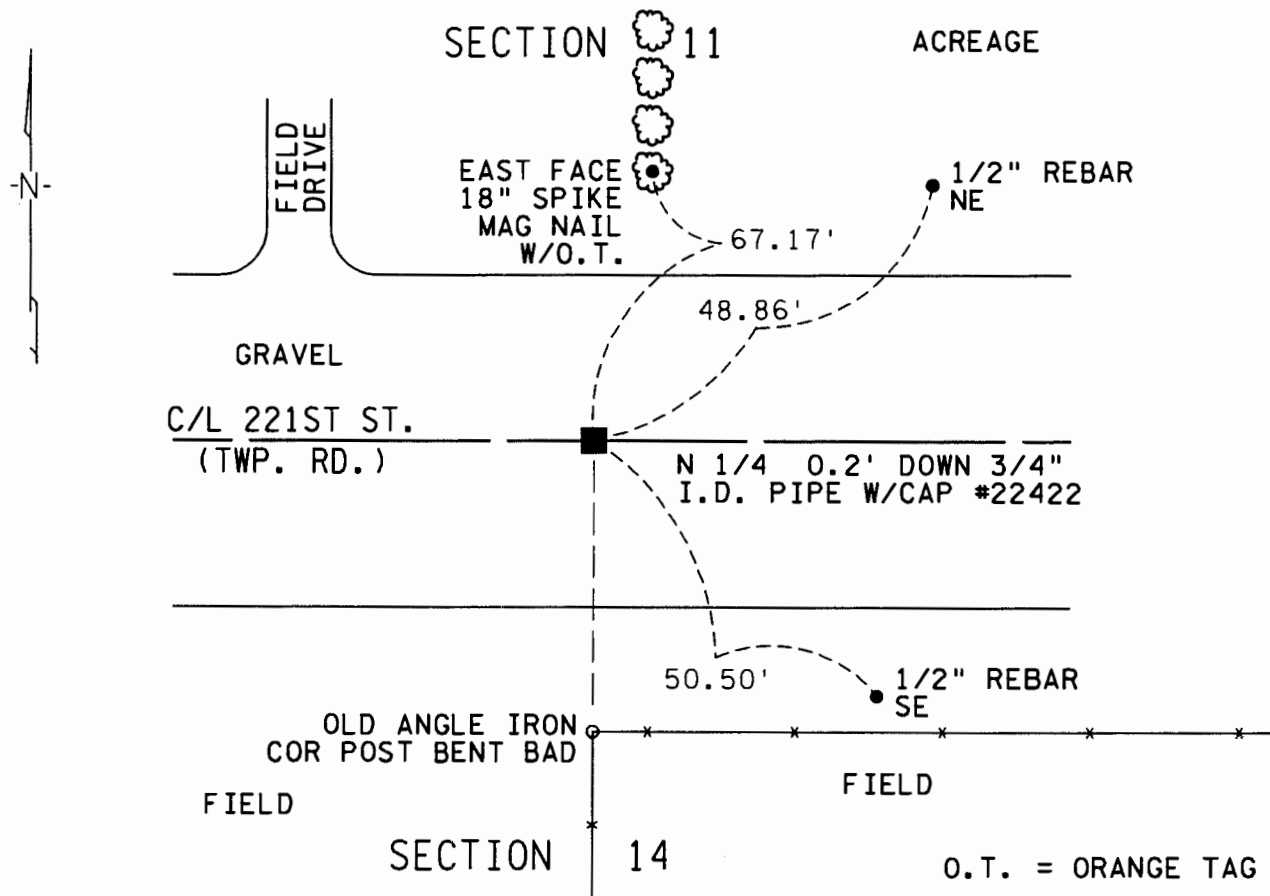
At the corner location shown on the sketch :

On 07-15-04 found nothing

left monument as found,  lowered monument,  removed monument (explain)

On 7-29-04 placed a 3/4" I.D. Iron pipe 0.2' below gravel surface.

Sketch of reference ties



Statement of evidence relative to this corner location is on back page

I hereby certify that this document and the data contained herein was prepared by me and under my direct supervision.

Douglas J. Reed 10-28-04  
 Signature Date

Registration No. 22422

Land surveyor,  Professional Engineer

County Surveyor,  County Engineer

OFFICE OF THE COUNTY RECORDER

County of Murray County

I hereby certify that this document was filed in the Co. Recorder office at 3:00 P.M. on the 17th day of November A.D., 2004

County Recorder James V. Johnson  
 By \_\_\_\_\_, Deputy

DOCUMENT NO. \_\_\_\_\_ NOV 17 2004

**Statement of Evidence**

NORTH QUARTER CORNER OF SECTION 14, TOWNSHIP 108 NORTH,  
RANGE 40 WEST, 5<sup>TH</sup> P.M.

October 1861:

Louis Brockmann, Deputy Surveyor, set a post with pits and mound for corner.

July 2004:

Isaiah Reicks, Yaggy Colby Associates, searched the occupation area with a metal detector, but did not find anything. The occupation area is not within a road fill section, so backhoe digging was not necessary. This remonumentation was done during a tower site survey for the Minnesota Department of Transportation.

The occupation position is on the centerline of the E-W township road, and on line with a fence to the south.

An analysis of the record and survey data indicates that the occupation position agrees with doubling line and distance between the 1/16 corner to the west and the northwest corner of Section 14. The fence corner at the center of Section 14 is within 1 foot of the N-S quarter line between the south quarter corner monument and the occupation position. The measured distance between the occupation position and the northwest corner of Section 14 is 2640.6 feet. The fence line ½ mile to the north in Section 11 projects within 3.1 feet of the occupation position. The occupation is accepted as the obliterated perpetuation of the Public Land Survey.

A ¾" I.D. iron pipe with cap was set 0.2' below the surface at the occupation position.

For further information regarding this survey, contact Yaggy Colby Associates, Rochester, Minnesota.